

Gleitlagerspannmutter für High-Speed Anwendungen
nach DIN 6499 / ISO 15488

Sleeve bearing clamping nut for high-speed applications
system according to DIN 6499 / ISO 15488

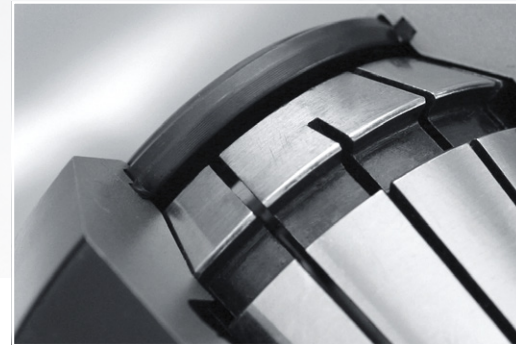
EasyClick

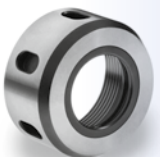
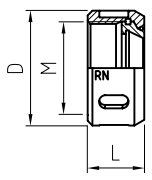


Gleitlager / Sleeve bearing



Dichtscheibe / Sealing disk



	Standard			Beschichtet / Coated			Dimensionen / Dimensions			
	Typ Type	Art. Nr. Item no.	Seite/Preisliste Page/Price list	Typ Type	Art. Nr. Item no.	Seite/Preisliste Page/Price list	M	D	L	
	RN11*5)	2.210.11	1	-	-	-	M14x0.75	19.0	12.0	
	RN16	2.210.16	1	-	-	-	M22x1.50	32.0	18.0	
	RN20	2.210.20	1	-	-	-	M25x1.50	35.0	20.0	
	RN25	2.210.25	1	-	-	-	M32x1.50	42.0	20.5	
	RN32	2.210.32	1	-	-	-	M40x1.50	50.0	23.0	
	RN40	2.210.40	1	-	-	-	M50x1.50	63.0	26.0	

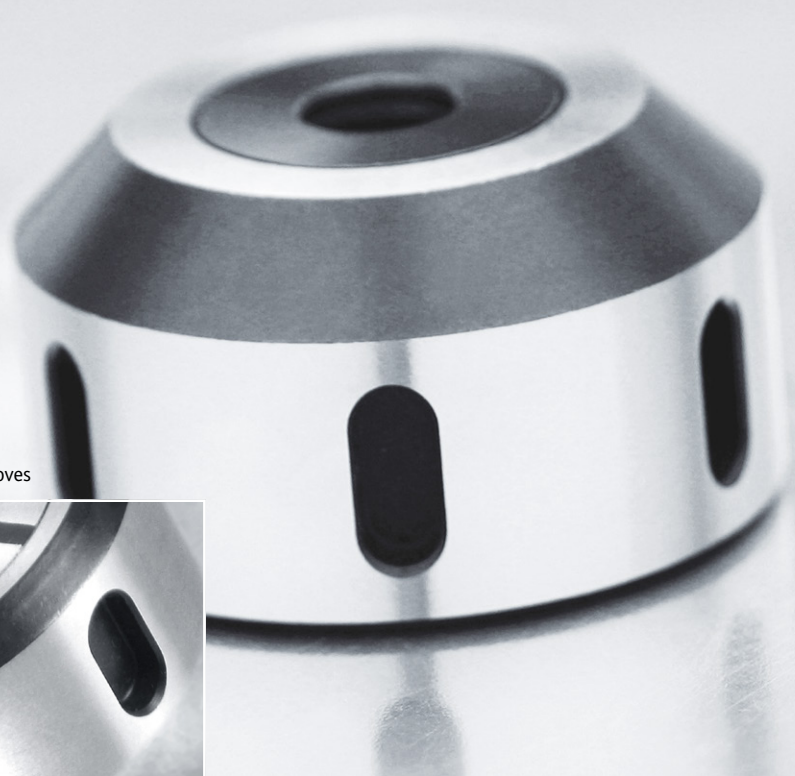
*1) Bitte beachten Sie die Restunwucht des gesamten Werkzeugsystems
*1) Please attend to the rest unbalance of the assembled tool system

*5) Ohne Gleitlager
*5) Without sleeve bearing



TYP RN, RNT

Geschlossene Nuten / Closed grooves



Zangen
Collets

ER / EX / ESX
ER-UP / ER-GB
DIN 6499
ISO 15488



Spannbereich
Clampin range

1.0mm



Härte
Hardness

660 HV



Max. Anzugsmoment
Max. torque

35
80
110
140
180
200



Max. Drehzahl*1)
Max. revolutions*1)

60'000
50'000
50'000
40'000
40'000
30'000



Rundlauf
Rotation

0.002
0.002
0.002
0.003
0.003
0.003



Schlüssel
Wrench

9.140.20
9.140.32
9.140.36
9.140.42
9.140.50
9.140.62



Dichtscheibe
Sealing disk

-
-
-
-
-
-