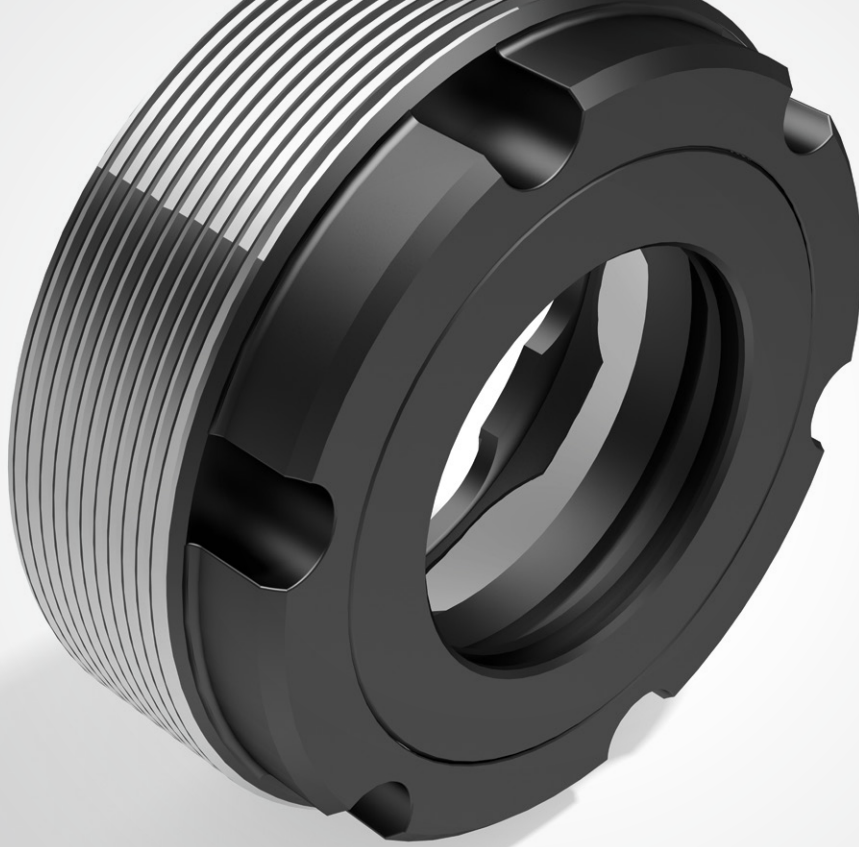


Spezial top-Q Special top-Q	Typ Type	Art. Nr. Item no.	Gewinde Thread	Zangen Collet	Schlüssel Wrench	Dichtscheibe Sealing Disc
	RAT40	2.310.40	M50x1.5	CER40	2.140.50	9.40.ddd
	RAT50K*1)	2.310.50	M68x1.5	CER50	9.140.62	9.60.ddd
	RHS16	2.125.16	M22x1.5	CER16	9.160.30	-
	RHS20	2.125.20	M25x1.5	CER20	9.160.32	-
	RHS25	2.125.25	M32x1.5	CER25	9.160.40	-
	RHS32	2.125.32	M40x1.5	CER32	9.160.50	-
	RHS40	2.125.40	M50x1.5	CER40	9.160.63	-
	GHS11	2.670.11	M13x0.75	CER11	9.170.11	-
	GHS16	2.670.16	M19x1.0	CER16	9.170.16	-
	GHS20	2.670.20	M24x1.0	CER20	9.170.20	-
	GHS25	2.670.25	M30x1.0	CER25	9.170.25	-
	R11MTT03	2.610.30	M13x0.75	ER11	9.110.11	direct sealed d3
	R11MTT04	2.610.40	M13x0.75	ER11	9.110.11	direct sealed d4
	R11MTT05	2.610.50	M13x0.75	ER11	9.110.11	direct sealed d5
	R11MTT06	2.610.60	M13x0.75	ER11	9.110.11	direct sealed d6
	R11MTT08	2.610.80	M13x0.75	ER11	9.110.11	direct sealed d8
	DRM12-1	2.520.12	M14x0.75	ETS12	9.100.11	-
	DRM16-1	2.515.16	M22x1.5	ETS16	9.100.16	-
	DRM16-2	2.525.16	M19x1.0	ETS16	SW22	-
	DRM16-3	2.520.16	M20x1.0	ETS16	SW24	-
	DRM20-1	2.520.20	M24x1.0	ETS20	SW28	-
	DRM25-1	2.520.25	M30x1.0	ETS25	9.140.42	-
	DRM16T	2.570.16	M20x1.0	ETS16	SW24	9.16.ddd
	TG75K	2.430.75	ACME 12U/"	Erickson TG75	-	-
	TG100K	2.431.00	ACME 12U/"	Erickson TG100	-	-
	SKN06	3.750.06	M15.5x1.0	SKC06	SW18	-
	SKN10	3.750.10	M21.5x1.0	SKC10	9.100.16	-
	SKN13	3.750.13	M27x1.0	SKC13	9.140.32	-
	SKN16	3.750.16	M32x1.5	SKC16	9.140.42	-
	SKN20	3.750.20	M38x1.5	SKC20	9.140.50	-
	SKN25	3.750.25	M45x1.5	SKC25	9.140.55	-
	Komplette Fertigung nach Kundenanforderung mit Laserbeschriftung Complet manufacturing according as customer requirement with laser marking					

*1) Kugelgelagert
*1) Ball bearing

SPEZIAL TOP-Q



Schlüssel Wrench	Typ Type	Art. Nr. Item no.
	SMS11	9.170.11
	SMS16	9.170.16
	SMS20	9.170.20
	SMS25	9.170.25
	SRU30	9.160.30
	SRU32	9.160.32
	SRU40	9.160.40
	SRU50	9.160.50
	SRU63	9.160.63
	SRM08	9.110.08
	SRM11	9.110.11
	SRM16	9.110.16
	SRM20	9.110.20
	SRM25	9.110.25

Zangen Collets	Typ Type	Art. Nr. Item no.	Bereich Range
	CER08B	CB.08-ddd	1-5
	CER11B	CB.11-ddd	1-7
	CER16B	CB.16-ddd	1-10
	CER20B	CB.20-ddd	2-13
	CER25B	CB.25-ddd	2-16
	CER32B	CB.32-ddd	3-20
	CER40B	CB.40-ddd	4-26
		RH08	R.08.ddd
RH12		R.12.ddd	3-8
RH20		R.20.ddd	4-12
RH25		R.25.ddd	5-16
	RH32	R.32.ddd	6-25
	SKC06	SKC.06-ddd	1-6
	SKC10	SKC.10-ddd	2-10
	SKC13	SKC.13-ddd	3-13
	SKC16	SKC.16-ddd	3-16
SKC20	SKC.20-ddd	4-20	
SKC25	SKC.25-ddd	16-25	